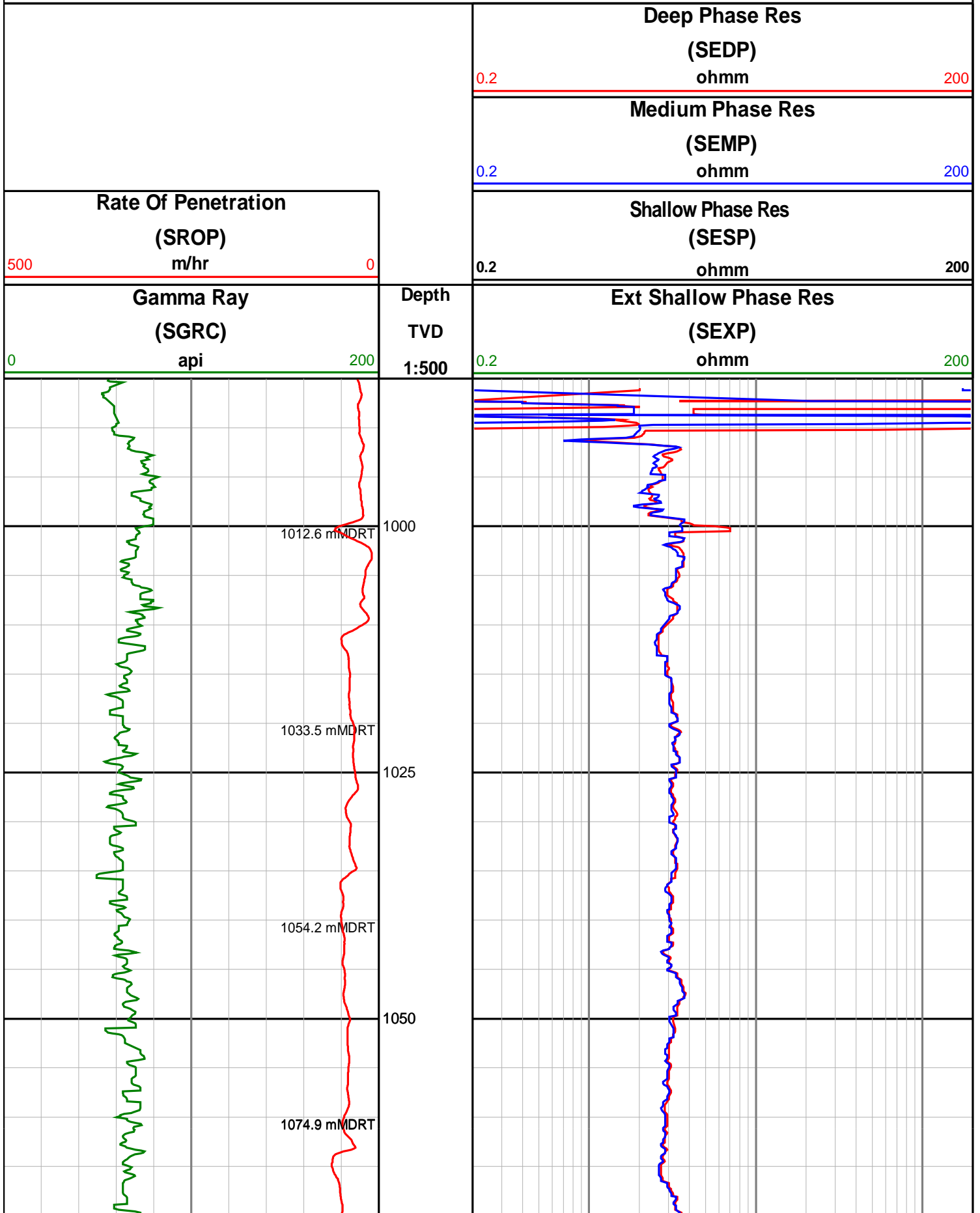
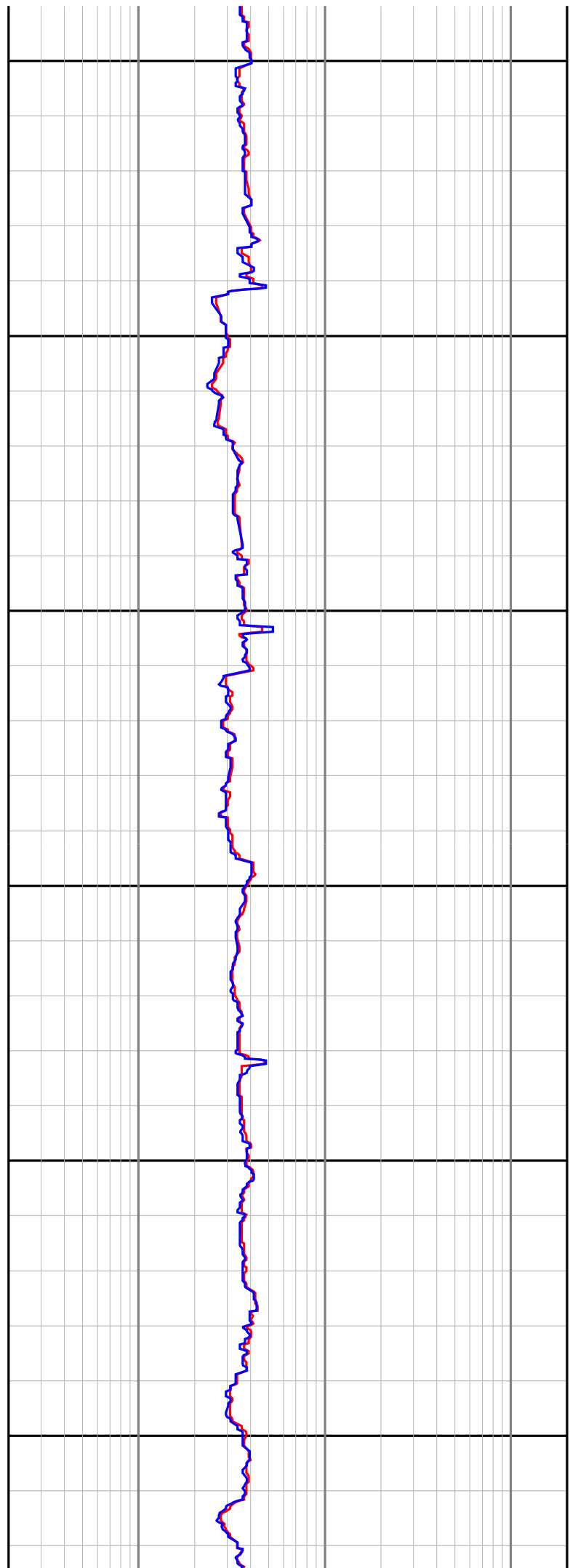
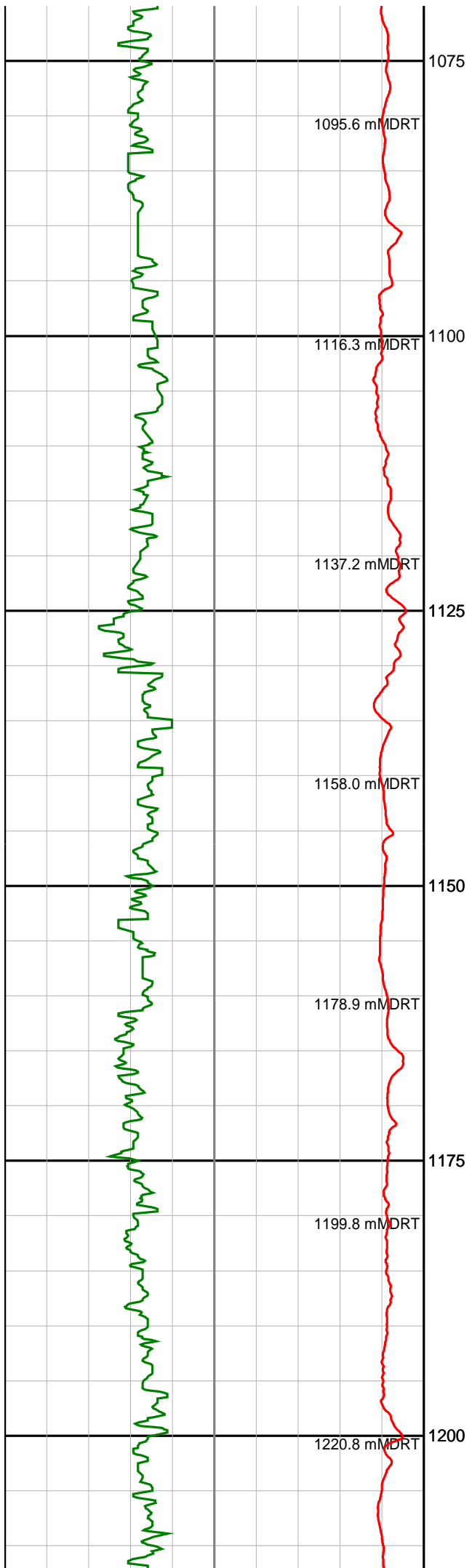


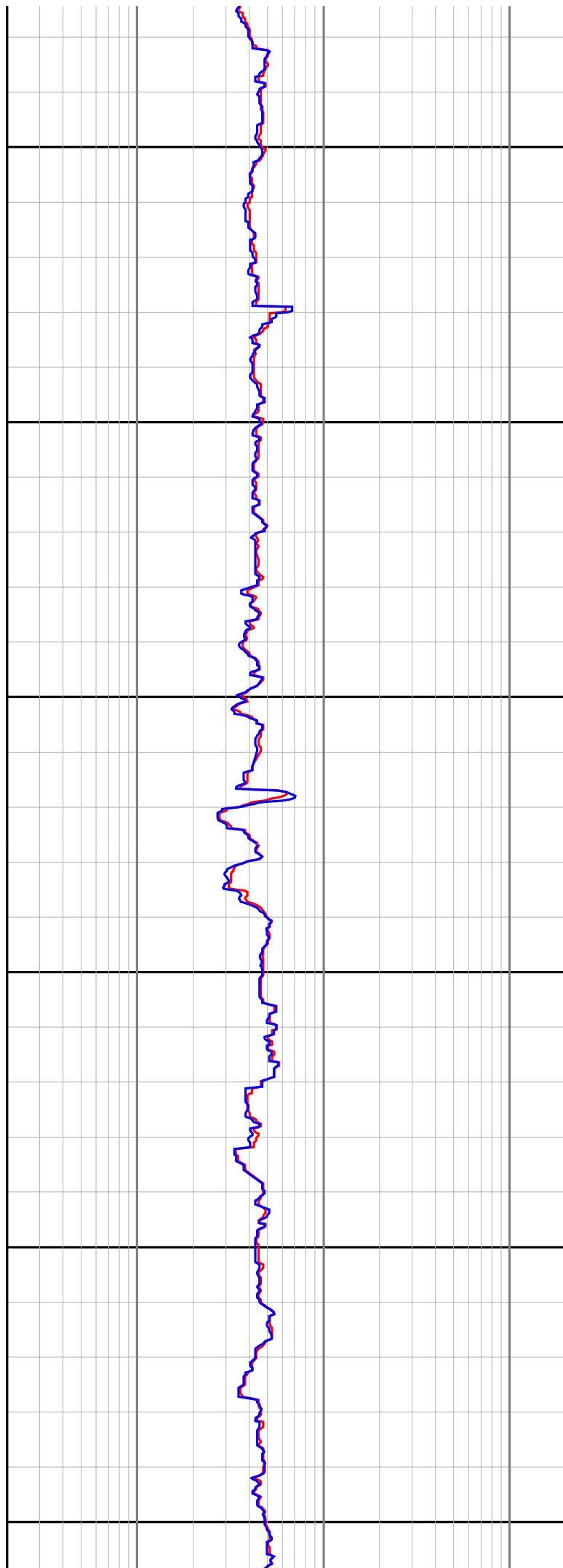
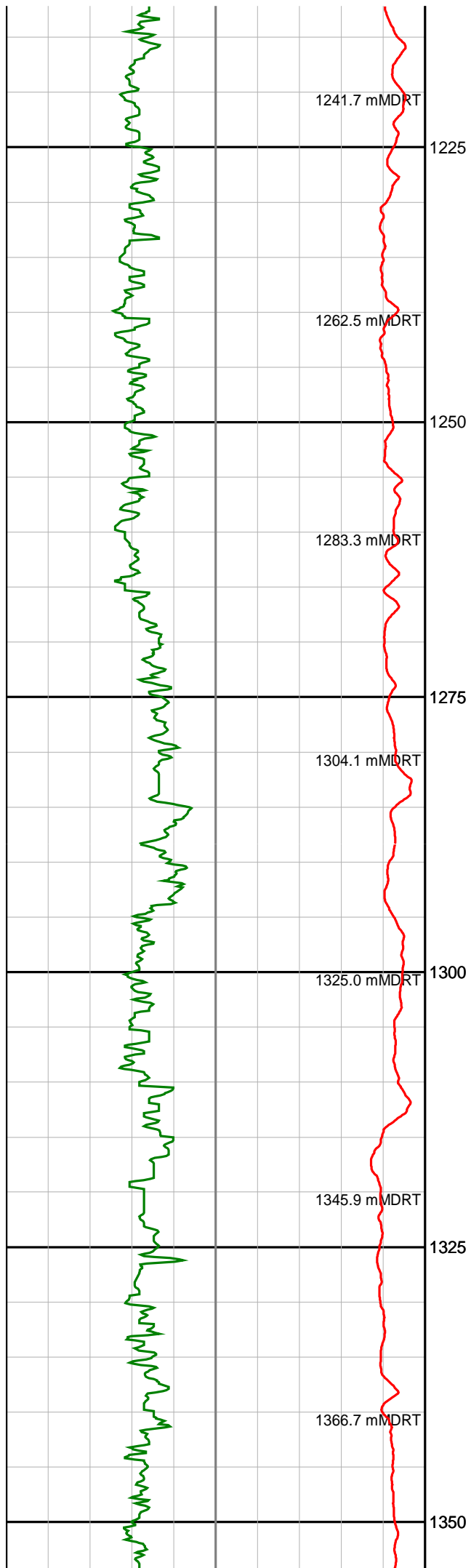
# Anzon Australia Ltd

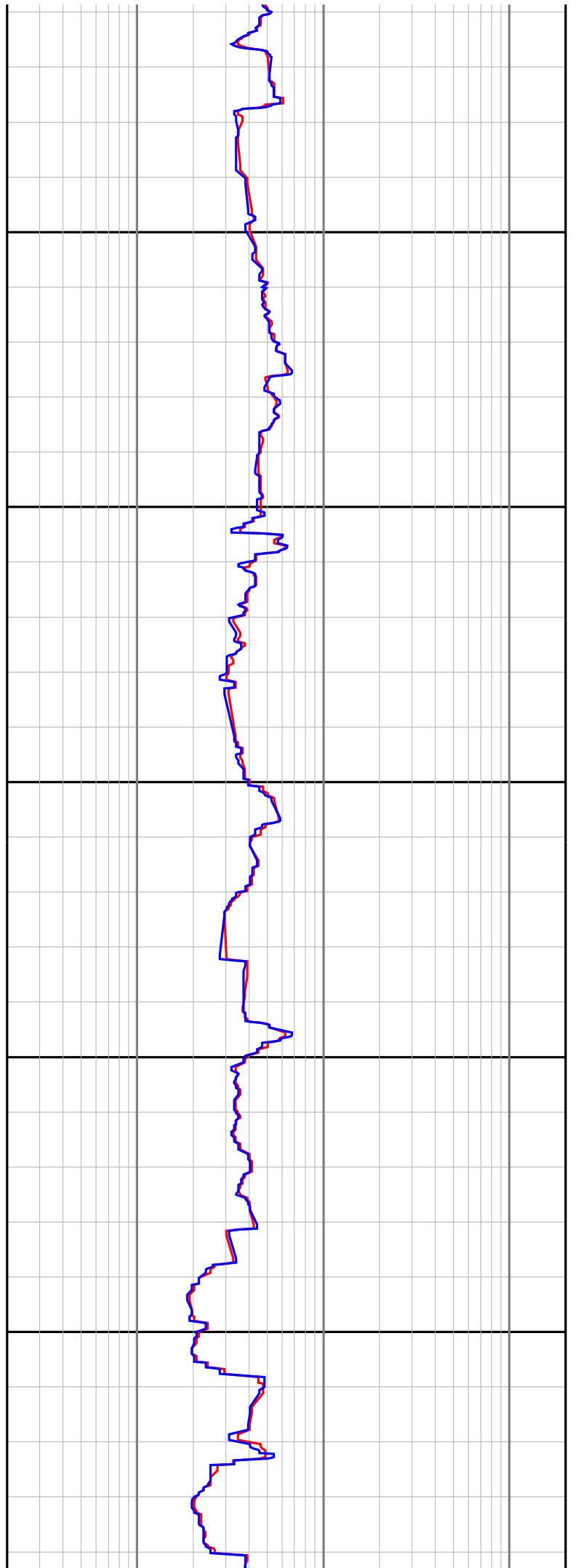
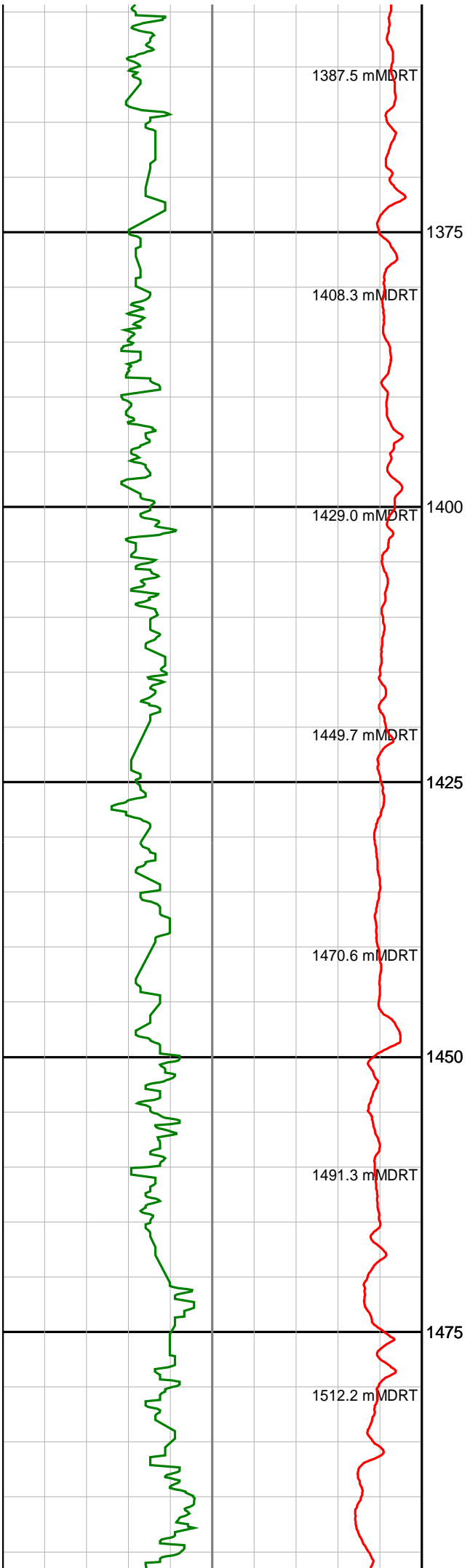
## Basker-5

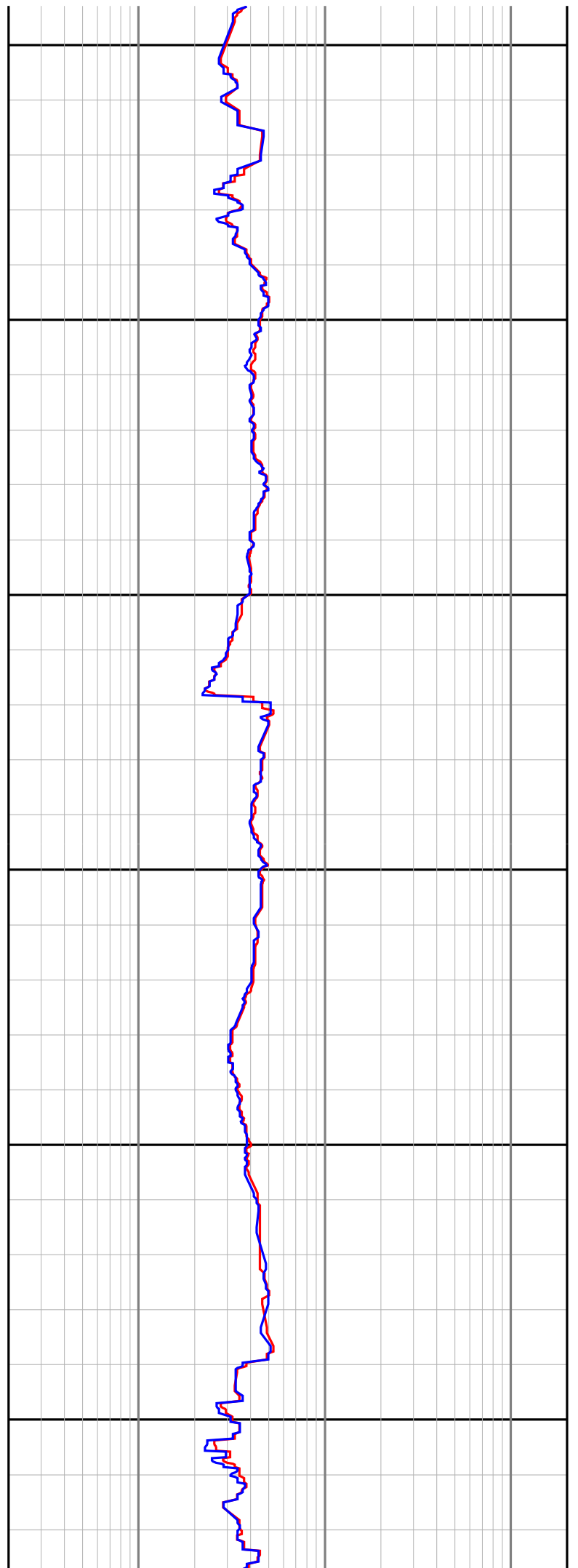
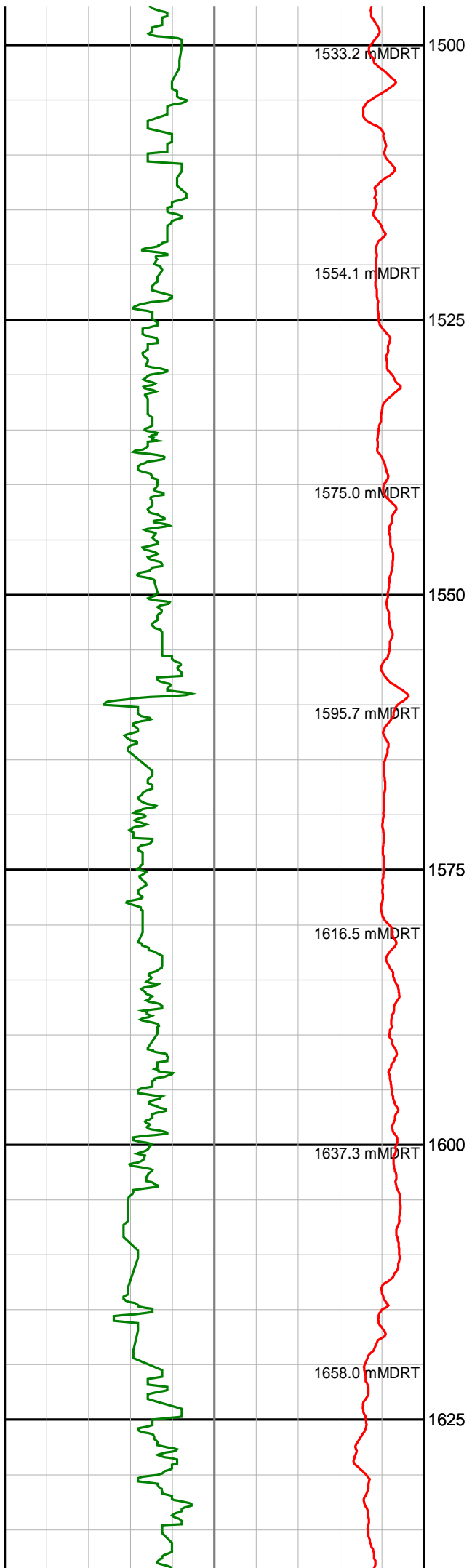
### Realtime LWD Log (Permanent Datum - LAT)

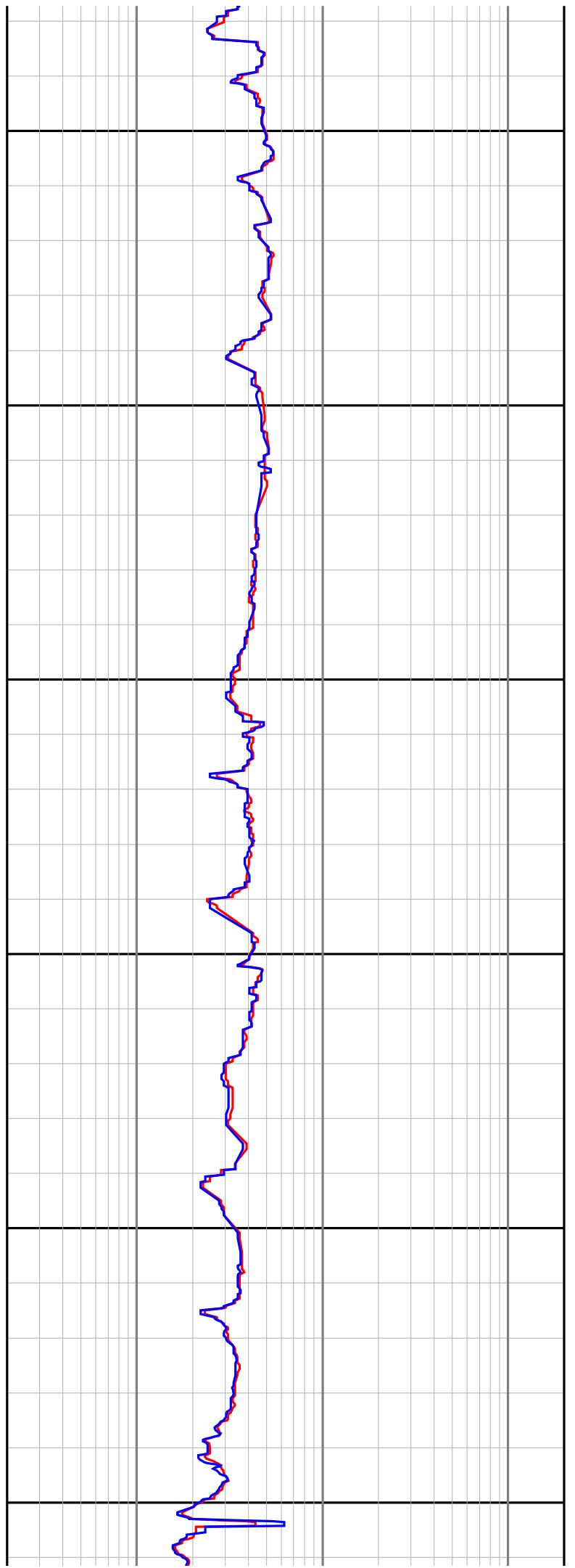
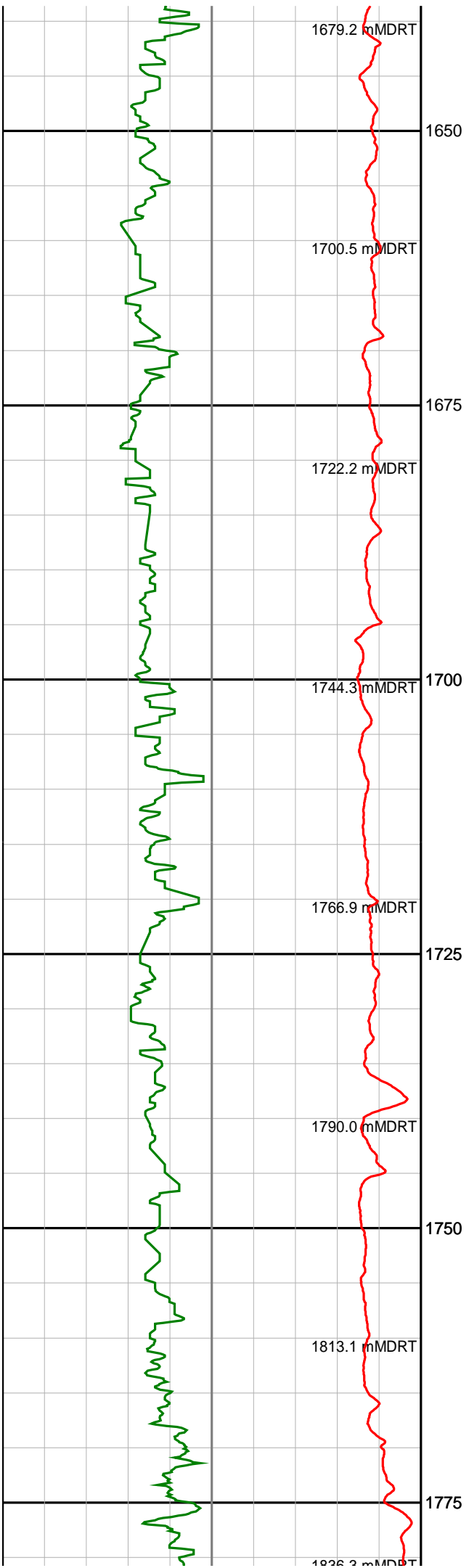


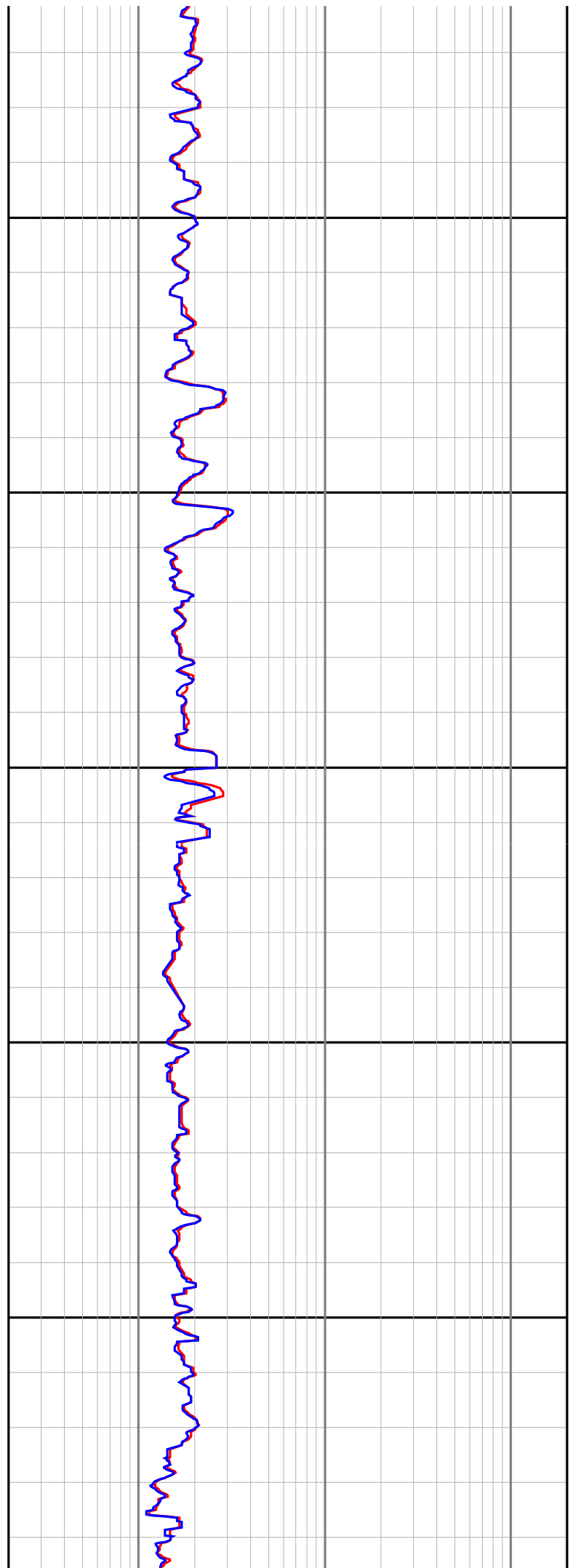
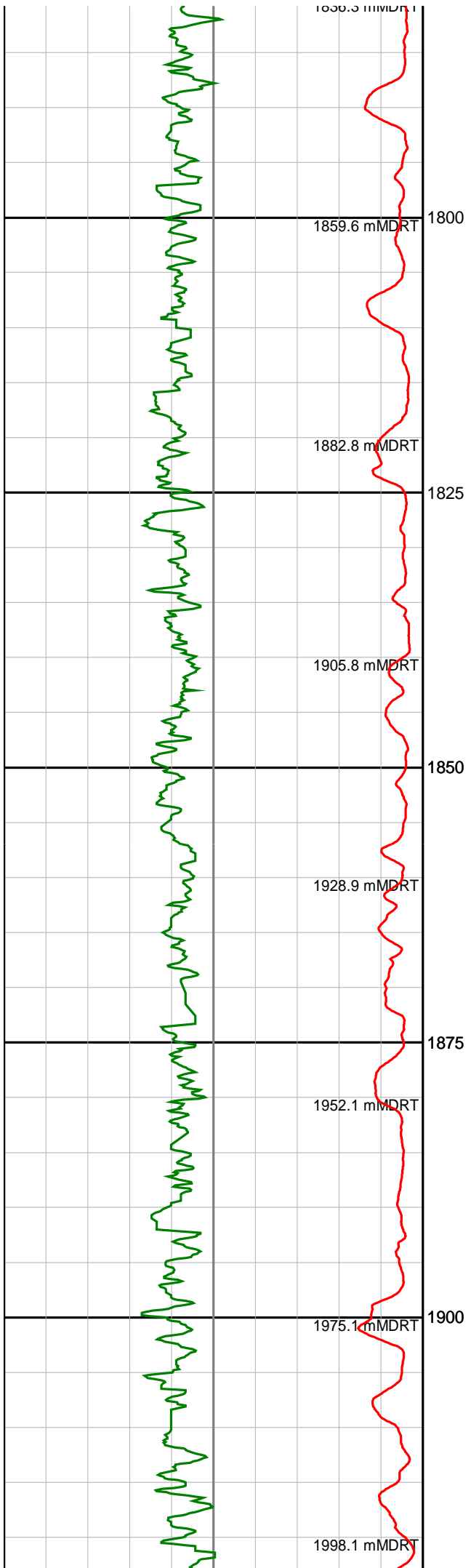


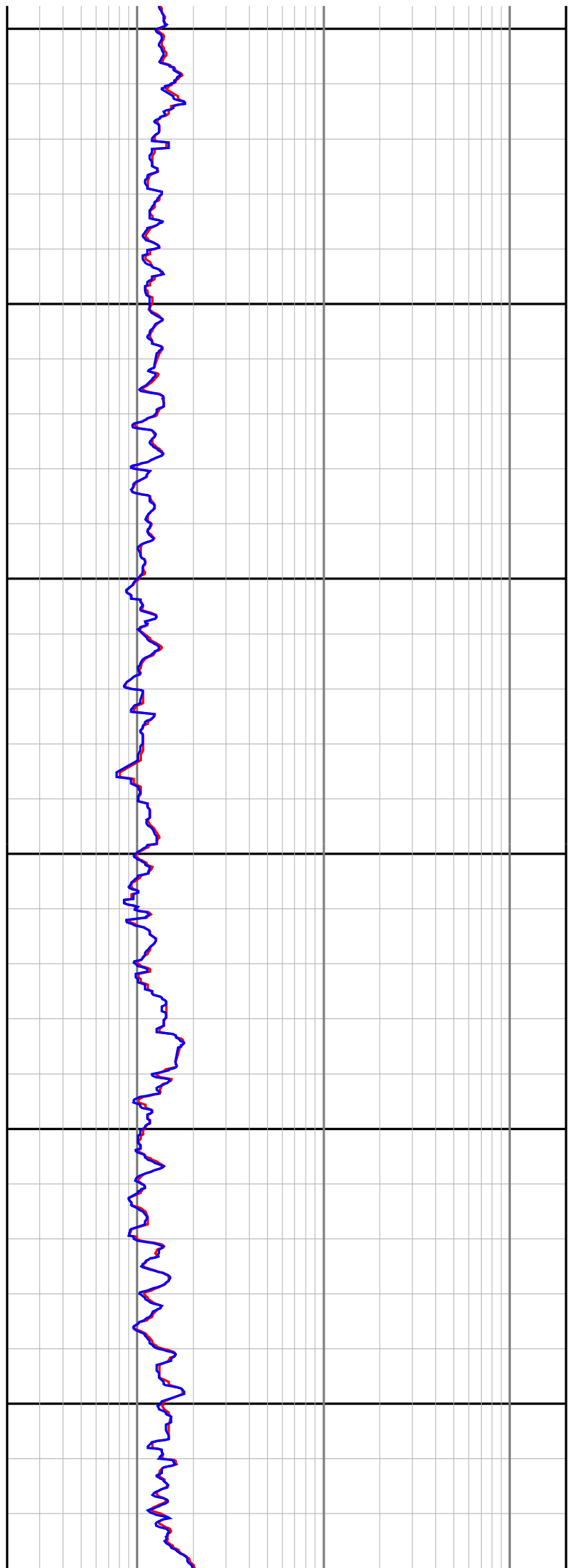
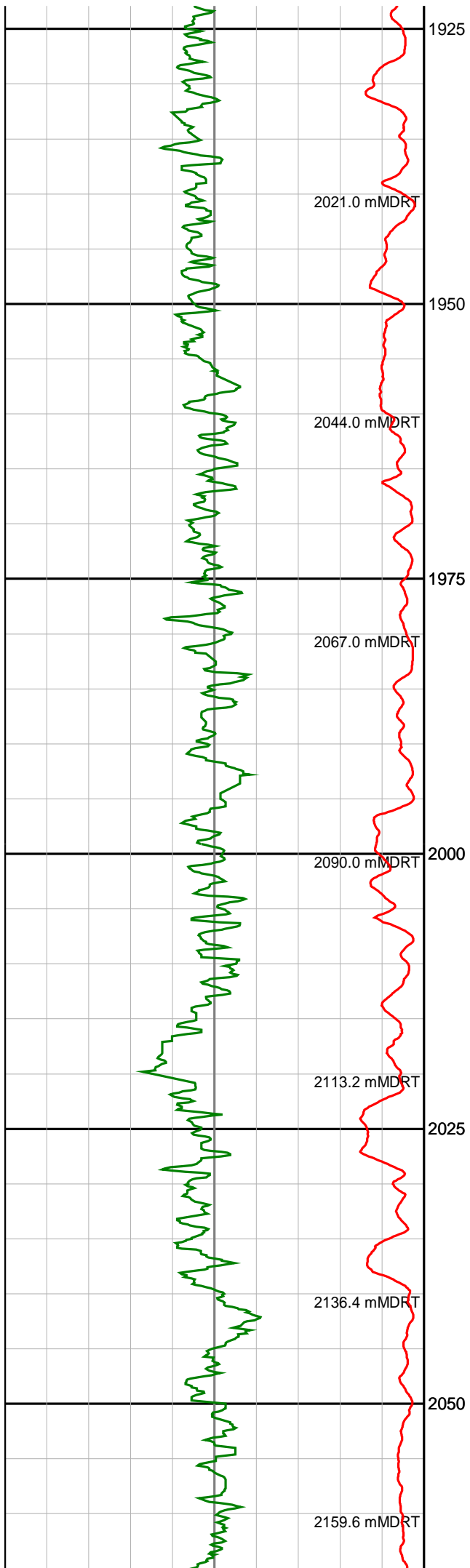




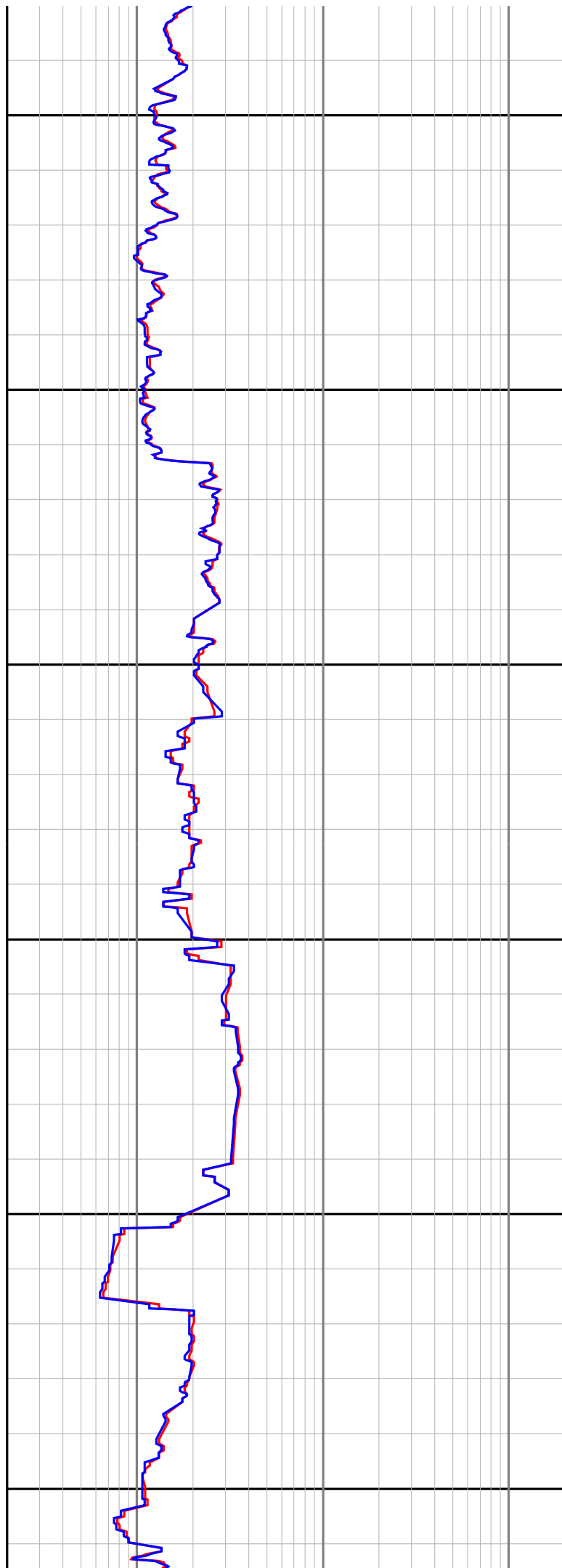
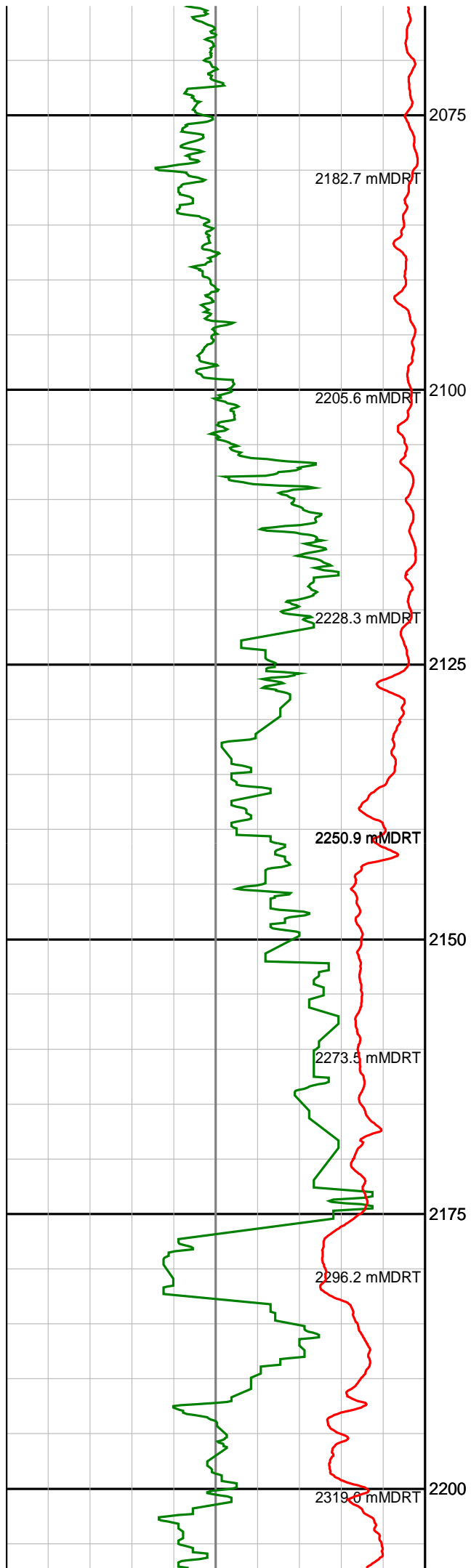


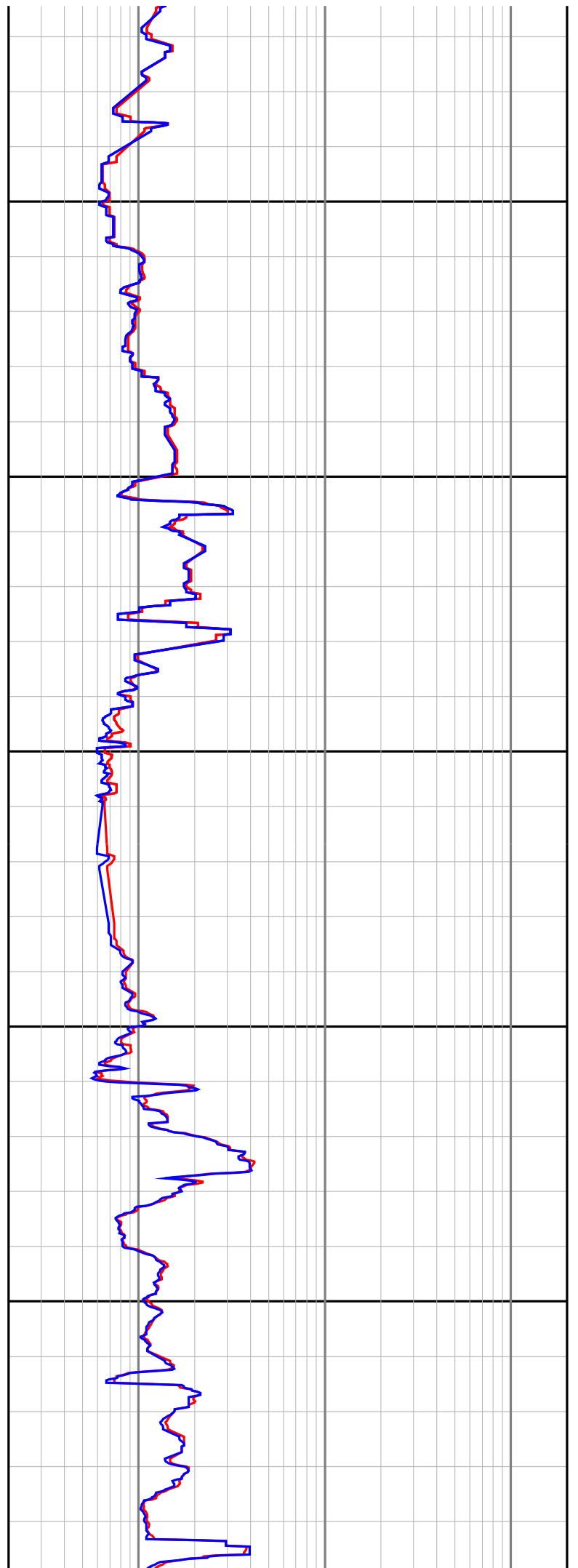
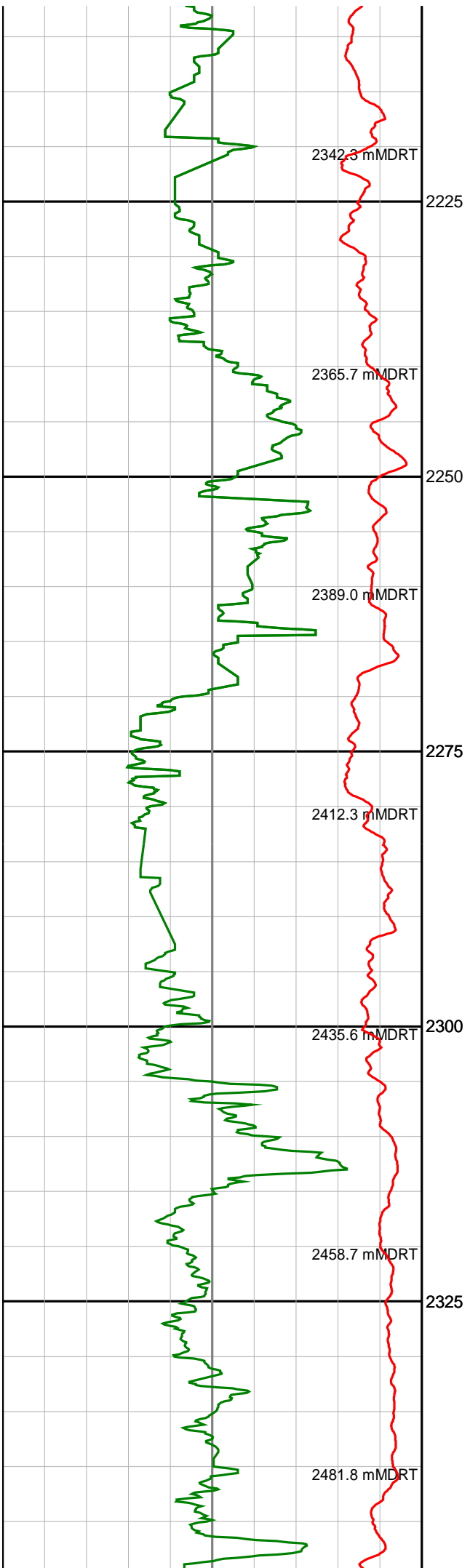


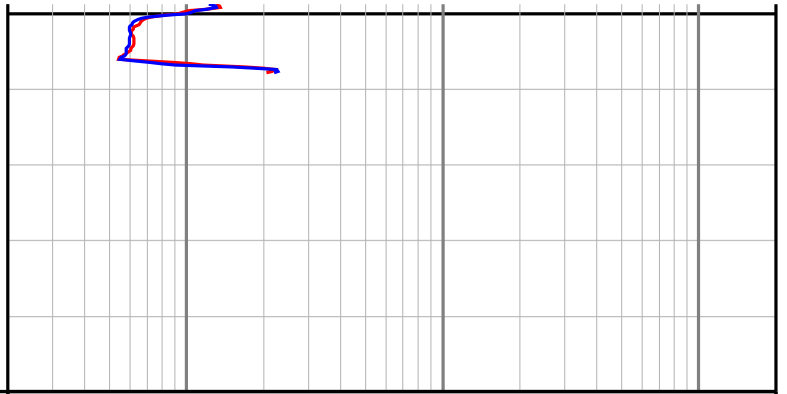
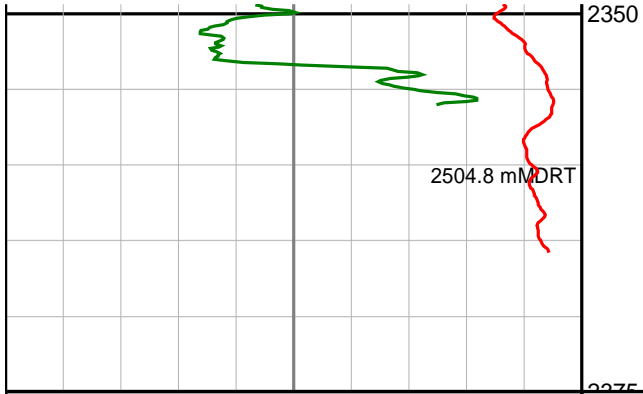












<b>Gamma Ray (SGRC)</b> api	<b>Depth TVD</b> 1:500
<b>Rate Of Penetration (SROP)</b> m/hr	

<b>Ext Shallow Phase Res (SEXP)</b> ohmm
<b>Shallow Phase Res (SESP)</b> ohmm
<b>Medium Phase Res (SEMP)</b> ohmm
<b>Deep Phase Res (SEDP)</b> ohmm

0

200

500

0

0.2

200

0.2

200

0.2

200

0.2

200